

## DUPLEX - FIRST FLOOR

### LIVING ROOM

TWIN SOFAS  
DECORATIVE MIRRORED FIREPLACE  
POWDER ROOM

### GREAT ROOM

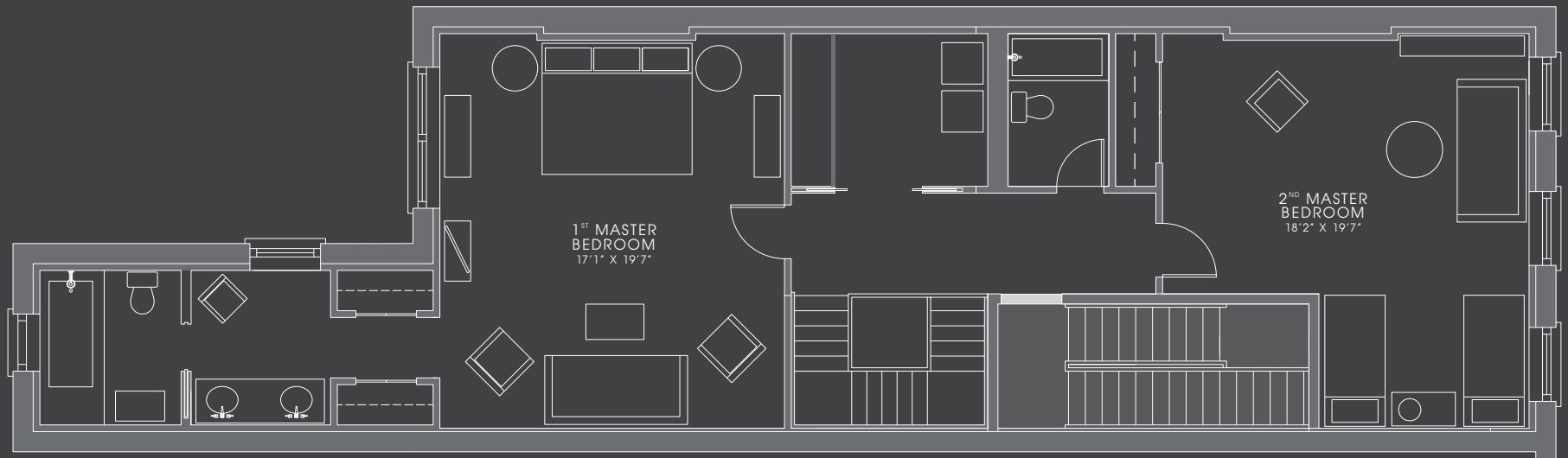
LEATHER CLUB CHAIR SEATING  
DINING TABLE SEATS EIGHT  
42" PLASMA TV

### KITCHEN

FULLY EQUIPPED STAINLESS STEEL APPLIANCES  
FISHER PAYKEL DOUBLE DISH DRAWER  
ISLAND WITH STOOLS

### TERRACE

GAS GRILL TO ENJOY



## DUPLEX - SECOND FLOOR

### 1<sup>ST</sup> MASTER BEDROOM

FURNITURE FROM RESTORATION HARDWARE  
KING BED WITH PILLOWS BY MADELEINE WINERIB  
PHOTOGRAPHY BY BOSSFELDT AND OTHERS  
42 INCH FLATSCREEN TELEVISION

### ENSUITE BATH

SOAKING TUB & FIXTURES BY WATERWORKS  
RAIN SHOWER  
DUAL SINKS WITH FRENCH DRESSING AREA  
LUXURY TOWELS

### 2<sup>ND</sup> MASTER BEDROOM

SEATING AREA WITH KENSINGTON SOFA  
DRAMATIC LEAD CRYSTAL CHANDELIER  
LIBRARY OF ART BOOKS AND DESK AREA  
TWIN BEDS THAT CAN BE COMBINED AS KING

### 2<sup>ND</sup> BATH

CARARRA MARBLE FINISHES  
TUB AND SHOWER  
KOHLER PEDESTAL SINK  
LUXURY TOWELS